

Company Profile



LAURELS FASHION LTD.



LAURELS FASHION LTD.

**HEAD OFFICE & FACTORY :
F.D. TOWER, KUNIA, NATIONAL UNIVERSITY, GAZIPUR-1704.**

INTRODUCTION OF THE COMPANY	4
PRODUCTION CAPACITY PER MONTH	4
LOCATION OF THE PROJECT	4
FACTORY ADDRESS	5
BANK REFERENCE (LIEN AND DEALINGS BANK)	5
NATURE OF BUSINESS	5
TURNOVER OF BUSINESS	5
CONTACT PERSONS	6
CUSTOMERS & PARTNERS	7
WORKING HOURS	7
OUR PRODUCT	8,9,10
QUALITY CONTROL TEAM	11
FOR JAPANESE BUYER	11
BROKEN NEEDLE RECORD PROCEDURE	12
METAL DETECTOR MACHINE	12
DUST REMOVER MACHINE	12
WINDING SECTION	13
KNITTING SECTION	13
KNITTING INSPECTION	14
LINKING SECTION	14
TRIMING & MENDING SECTION	15
WASHING SECTION	15
SWEING SECTION	16
PQC & IRONING SECTION	16
PACKING SECTION	17
WATER SUPPLY	17
DOCTOR'S FACILITY	17
CHILD CARE FACILITY	18
NO CHILD LABOUR	18
ACCESS & EXIT FACILITY	18
FIRE SAFETY	19
ETP	19
POWER AND ENERGY	20
FACTORY PREMISES	20
TOTAL MANPOWER	21
MACHINE DESCRIPTION	21
OUR CERTIFICATES AND AFFILIATION	22

INTRODUCTION OF THE COMPANY

Laurels Fashion Ltd. is an organization of highly motivated, disciplined and trained team members who are obstinately trying to serve clients and associates. We are entirely computerized Jacquard Sweater project with 160000 SQF exporting all kinds of sweaters, pullovers and cardigans with tradition of quality control, competitive price and customer satisfaction .Technical talents and skilled labour force have facilitated error free productions,being successful to satisfy our customer with commitment, quality and right product on time.Working with different buyers of different countries adds to our experience for excellence we believe.

We invite you to explore the world of Laurels Fashion Ltd.

PRODUCTION CAPACITY PER MONTH

GAUGE	MACHINE	PRODUCTION QTY/MONTH
Jacquard (Multi)	100 PCS	100,000 PCS
Jacquard (12 GG)	200 PCS	200000 PCS
TOTAL	300 PCS	300000 PCS

COMPANY LOCATION



ADDRESS

LAURELS FASHION LTD.

154, 330 F.D Tower Kunia, National University,
Dhaka-Mymensingh Highway, Gazipur- 1704, Bangladesh
IP Phone: +880-964-2609020
E-mail: shahin@laurelsfashion.com
Web: www. laurelsfashion.com

BANK DETAILS

United Commercial Bank Ltd.

Tongi Branch,18, SK Mannan Tower, Charag Ali,
Tongi, Gazipur, Bangladesh
SWIFT: UCBLBDDHTNG
Account Name : Laurels Fashion Ltd.

NATURE OF BUSINESS

We are 100% export oriented sweater manufacturing company as per our buyer requirements.

TURNOVER OF BUSINESS

We are expecting to shipout worth \$ 15 million US dollars in a year.

CONTACT PERSONS



MD. ABU SHAHIN

(Chairman)

IP Phone: +880-946-2609020,

Mobile: +880 1672 037 889

E-mail: shahin@laurelsfashion.com



MD. SHAMEEM ESTIAQUE

(Managing Director)

IP Phone: +880-946-2609020,

Mobile: +880 1711 523 456

Email: shameem@laurelsfashion.com



MS. SADIA SHIMA

(Director)

IP Phone: +880-946-2609020,

Mobile: +880 1678 727 703

Email: sadia@laurelsfashion.com



MD. MASUDUR RAHMAN

(Director)

IP Phone: +880-946-2609020

Mobile: +88 01678 727 704

E-mail: masud@tjsweaters.com

CUSTOMERS AND PARTNERS

SONAE
FASHION

SZERET

terranova®

GLACIER

RENNER

CARRERA®
Jeans

しまむら

AMERICAN HOLIC

C·O·L·Z·A

sanwa®

oui

Takihyo CO., LTD.

NEWYORKER

riachuelo R

TOYOSHIMA

WORKING HOURS

The 6 days in a week and 8 hours in each day. So normally 48 hours in a week. Sometimes 10 hours in a day with overtime allowance. Friday is closed.

OUR PRODUCTS

Pullovers; Cardigans; Jumpers; Leggings, Hats, Scarves, Mufflers, etc

1. In Fancy, Jacquard Knitting with All sorts of Regular & Fancy yarn.
2. In Piece dye, Pigment dye, Space dye, Top dye, Dip dye, Tie dye
3. In Acid wash, Stone wash, Enzyme wash, Rubber Ball wash, etc

Some items are as below:

Kids Sweaters



Men's Sweaters



Ladies Sweaters



QUALITY CONTROL TEAM

We have a strong QC team under a quality assurance Manager in our factory. They conduct activities that validate quality requirement. This typically involves planning, observation and inspection. These full time QC's do inline inspection in each section. All the quality controllers submit their daily reports to Q.A manager with highlighting the major points with final comments and rectify the problem accordingly. After maintaining the above procedure, the Q.A manager carries his own final inspection. If Q.A manager seems the goods are standard for buyer's inspection, then we invite the inspection authority for final inspection.



FOR JAPANESE BUYER



BROKEN NEEDLE RECORD PROCEDURE

The store officer is maintaining the broken needles record and he is the only Person who will issue the needles and receive the broken needles from the operators. We maintain a register book section wise for these broken needles.

METAL DETECTOR MACHINE

We check our garments with metal detector machines. This procedure is done after poly the garments. If any garment is contaminated with metal, we then find out the metal from the garment and maintain a register for these metal. Unfortunately if this metal is found in the garment then we destroy the particular garment. After passing through the detector, we keep the garments in an export carton and a metal checked seal is given on the carton so that we can sort out the metal checked carton.



DUST REMOVER MACHINE

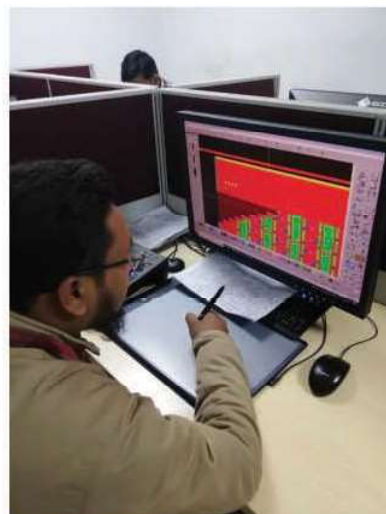
Dust removing procedure is not done manually in our factory. We have imported dust remover machine to export dust free goods.



WINDING SECTION



KNITTING / JACQUARD SECTION



KNITTING INSPECTION



LINKING SECTION



TRIMING & MENDING SECTION



WASHING SECTION



SWEING SECTION



PQC & IRON SECTION



PACKING SECTION



WATER SUPPLY

Company has made its own water supply facility.



DOCTOR'S FACILITY

One doctor and one nurse are always available for medical treatment. In addition to that we ensure sufficient medicines and help our workers for necessary treatment in our factory.



CHILD CARE FACILITY

We have child care facility, so that female workers who have baby can bring their children in the factory while working.



NO CHILD LABOUR

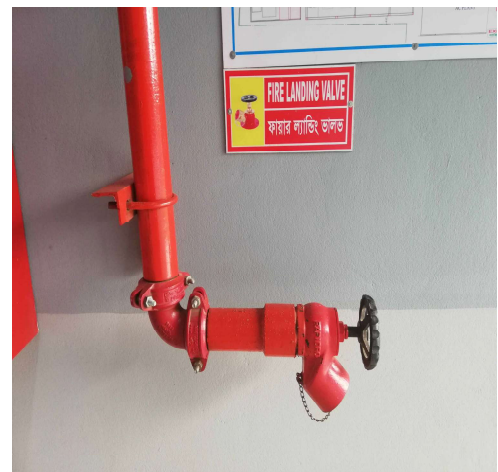
All workers working in the factory are above the age of 18. All workers are given written declaration of their age. If there is a doubt regarding their age they are examined or verified by the civil surgeons of Bangladesh. This is the procedure of labor law. So there is no child labor in our factory.



ACCESS AND EXIT FACILITY

Factory building has Three (3) wide stairs.

FIRE SAFETY



ETP



POWER AND ENERGY



FACTORY PREMISES



TOTAL MANPOWER

Winding Section	50	Ironing Section	50
Knitting Section	100	Finishing Section	150
Linking Section	350	Sewing Section	30
Triming Section	80	Jacquard Section	250
Mending Section	70	Office	50
Washing Section	20		
TOTAL			1200

MACHINE DESCRIPTION

Knitting Machine:

<u>GAUGE</u>	<u>MACHINE</u>
Jacquard (Multi)	100 PCS
Jacquard (12 GG)	200 PCS
TOTAL	300 PCS

Linking Machine:

<u>GAUGE</u>	<u>MACHINE</u>
5	25 SETS
6	40 SETS
8	100 SETS
14	125 SETS
16	10 SETS
TOTAL	300 SETS

SL NO	DESCRIPTION	MACHINE QTY
1	Washing Machine (200 Lbs& 110 Lbs)	5 NOS
2	Hydro Extractor Machine	5 NOS
3	Dryer Machine	7 NOS
4	Steam Boiler	2 NOS
5	Over-lock Machine	12 NOS
6	Sewing (Plain)Machine	20 NOS
7	Bartac Machine	10 NOS
8	Button Hole Machine	5 NOS
9	Button stitch Machine	5 NOS
10	Flat Lock Machine	4 NOS
11	Steam Iron	70 NOS
12	Dust Remover	3 NOS
13	Metal Detector	2 NOS
14	Auto placket (7gg)	5 NOS
15	Auto placket (12gg)	10 NOS
16	Auto Drawstring Machine(All gauge)	5 NOS
17	Winding Manual Machine	20 NOS
18	Auto Winding Machine	4 NOS

OUR CERTIFICATES AND AFFILIATION:



Thank You